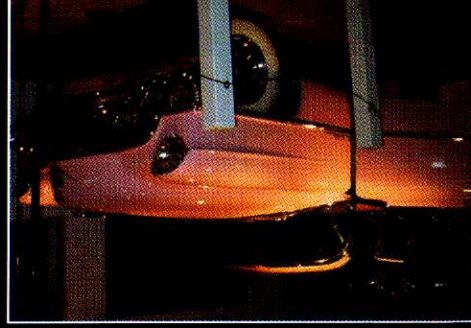


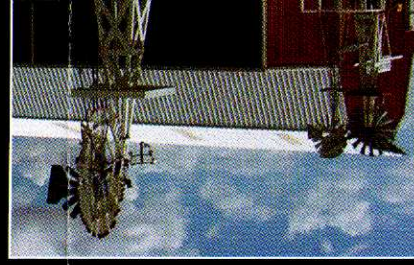
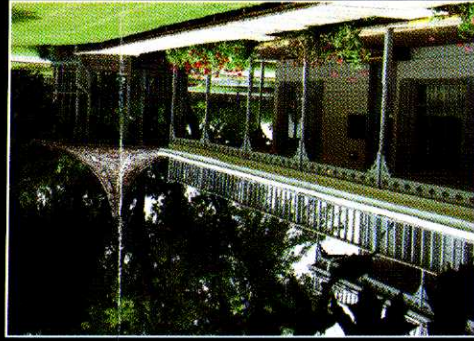
National Route 66 Museum

Inside this museum a road motif takes visitors to all eight states along the "Mother Road" from Illinois to California. Photographs, vintage autos, and recorded personal accounts vividly re-create the hey-day of this historic route.



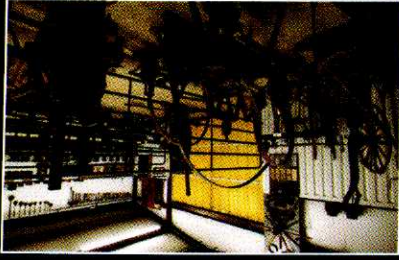
Old Town Museum

Early Oklahoma pioneer life is depicted as visitors wander through this grand two story Victorian house. Visitors will find the lower level of the house filled with early pioneer life, Stars & Stripes Room, Native American Gallery, and Elk City's own Susan Powell Miss America 1981 display among the many sites to see. The upper level is devoted to the early cowboy and rodeo way of life. Numerous items are on display that have been donated by the world famous Beutler Brothers Rodeo Stock Producers. The Beutler Ranch is just north of Elk City and they have been producing award winning rodeo stock since 1929.



Blacksmith Museum

Visitors to the Blacksmith Museum can view how blacksmiths created objects from iron or steel by forging the metal by using tools to hammer, bend and cut. grills, railings, light fixtures, furniture, sculpture, tools. Blacksmiths produce things like wrought iron gates,





While at National Route 66 Museum Complex don't miss...

- The Whited Grist Mill
- The Opera House
- Rock Bluff School
- "Cowtown" Watering Hole
- The Livery Stable
- The Memorial Chapel
- The Railroad Depot
- Country Doctors Office
- Paul Jones Drug Store

where you can still buy stick candy and soda pop comes in a bottle! (summer hours only)



The Memorial Chapel, The Opera House, and "Cowtown" Watering Hole are all available for meetings, weddings or family events. Please call 580.225.6266 for more information.

Hours

Mon.-Sat. 9 a.m.-5 p.m & Sun. 2-5 p.m.

Closed New Year's Day, Easter, Thanksgiving & Christmas.

Admission

Adult - \$5.⁰⁰ Students, AAA, 60 & up - \$4.⁰⁰

Bus tours welcomed. Discounts given for groups.

Call 580.225.6266 to schedule a tour.

Directions

The museum is located at the corner of historic Route 66 and Pioneer Road, adjacent to the expansive Ackley Park.

Eastbound - Exit 32
and travel 5 miles

Westbound - Exit 41
and travel 4.8 miles



National Route 66

MUSEUM COMPLEX

2717 W. Highway 66 • Elk City, Oklahoma 73644

(580) 225-6266 • www.visitelkcity.com

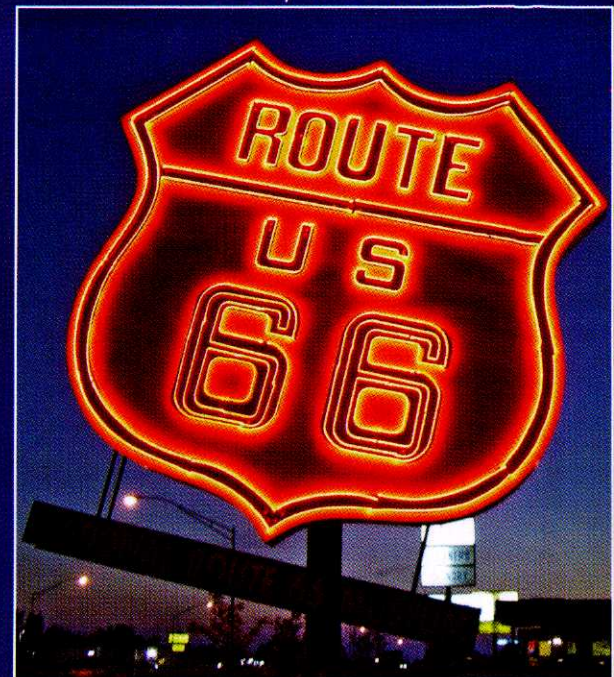
www.elkcity.com • cityhall@elkcity.com



National Route 66

MUSEUM COMPLEX

— ELK CITY, OKLAHOMA —



National Route 66 Museum

National Transportation Museum

Old Town Museum

Farm & Ranch Museum

Blacksmith Museum

